

Small enough to care : Big enough to deliver



Universal Transformers



ELECTRONIC APPLIYANCES

**Turnkey Automation Solution for processes/
production machines in diverse industries**

**Turnkey Electrical Solutions - EPIC contracts,
manufacturing of PCC, intelligent MCC panels**

**Trading of industrial electrical items such as
switchgears, cables, motors, drives and PLC items...**

AUTOMATION SOLUTIONS

We are leading solutions provider in the field of control automation, instrumentation and related services.

We have to our credit many large-scale projects that have been designed and implemented using Siemens hardware (and other reputed hardware brands) like PLCs, drives and SCADA software.

Our expertise lies in providing appropriate engineering solutions for factory/ process automation . We have provided complete end to end solutions for diverse industries such as steel, cement, textile, oil and gas, wire drawing , tyre manufacturing , packaging etc. We have work force of 150+ employees including 50 engineers. We have Manufacturing setup in Indore and Bhopal exceeding 5000 sq meters.

We have been Siemens "Solution Provider" since 1991 and are also associated with Siemens for other products such as switchgear, motors, power protection relays and panel manufacturing. We are continually upgrading our expertise by investing in research and development (have our own in-house training center) and gearing up for new technologies .



We provide the expertise in the following domains:

- Application survey and system architecture design
- Hardware selection
- Panel manufacturing
- Field cabling supervision
- Commissioning and start-up
- Operator training
- As-Built Documentation
- Operations and Service Manuals

Our team of experienced engineers is always geared up to support our clients and ensure that we deliver all projects in time and on budget.

OUR EXPERIENCE

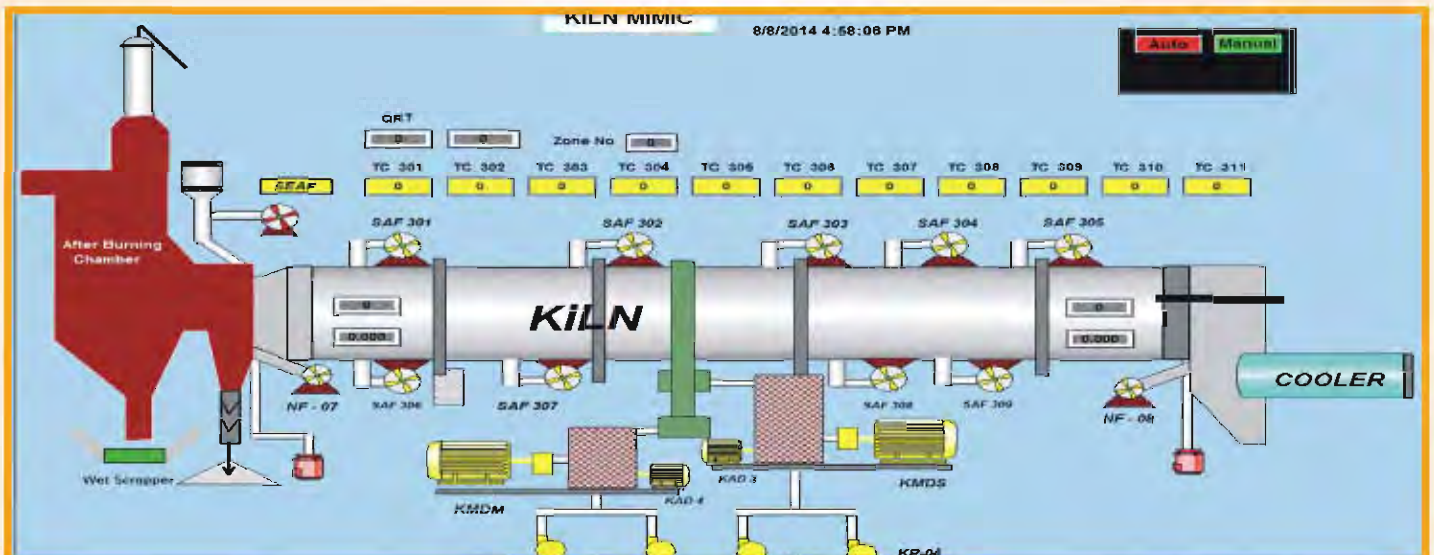
FACTORY AUTOMATION

- Straight line wire drawing machine
- High speed respooling machine for bead wire
- Servo capper machine for pharma application
- Flying shear for tube cutting machine
- Polyester slitting machine
- Two axis punching machine
- CTL line for galvanized sheets
- Capacity enhancement of ring frame machine
- Cigarette filter making machine
- Bandsaw machine



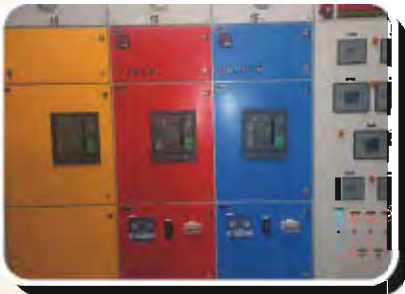
PROCESS AUTOMATION

- 350 ton sponge iron plant
- 4.3 MW co-generation power plant automation
- LPG bottling plant
- Bead wire coating line automation
- Chemical neutralization process automation



ELECTRICAL SOLUTIONS

- **L.T. ELECTRICAL PANELS**
Capacity Executed - 415V, 3PH 4-W, 50 Hz, 6300A
- **MOTOR CONTROL CENTRE**
Capacity Executed - 415V, 3PH 4-W, 50 Hz, 3200A
- **BUS DUCTS**
Capacity Executed - 415V, 3PH 4-W, 50 Hz, 6300A
- **LT PCC PANEL FIXED AND DRAW OUT TYPE**
- **INTELLIGENT MCC PANEL**
- **RELAY CONTROL PANEL FOR MV SWITCHGEAR PROTECTION**
- **APFC /RTPFC PANELS**
- **DISTRIBUTION BOARD FOR LIGHT CONTROL/POWER CONTROL**
- **CONTROL DESKS, OPERATOR POSTS, REMOTE I/O PANELS**
- **AC/DC DRIVE PANELS, PLC PANELS, SOFT STARTER PANELS**
- **CONTROL TRANSFORMERS, CHOKES, REACTORS**
- **RECTIFIER PANEL, TEST BENCH, CABLE TRAY**



SERVICES:-

We offer end to end solutions for the electrical activities for industries such as design, engineering, manufacturing, procurement, installation and commissioning of electrical systems.

Some of them are-

- Switch yard design as per electricity board rules
- Installation and testing of switchyard
- Bus duct installation, LT installations, cable tray and cable laying work for entire Industry
- Solutions for power factor correction, DG changeover, harmonics reduction, voltage fluctuation etc.

CERTIFICATIONS

- Siemens Technology SIEPAN to manufacture world-class electrical panels having totally type tested assembly
- CPRI type Test conducted for short circuit 70/100 kA at 4000 A
- ISO 9001 certified company
- MSME, NSIC, CRISIL, "A" class electrical contractor license



MANUFACTURING SETUP

- CNC turret punching press from Muratec
- CNC bending machine from Baykal
- Aluminium / Copper bus bar bending, cutting and punching NC control station from Arco Whitney
- Hydraulic press break
- Punch press
- MIG welding, arc welding, spot welding machines
- Shot blasting machine with 3 m³ chamber
- Powder coating chamber with cyclone 3m³
- Curing oven with temperature control



COMPANIES REPRESENTED



SIEMENS LTD.

LT Switchgear Components (Contactors, MCBs, OLR, SDF, MCCBs, MPCBs, Thyristor & HRC Fuses ACBs, Push Buttons, Selector Switches, Timers etc); AC Motors; AC & DC Drives; PLC System; Engineering Solutions; Power Supplies; SCADA Systems; HMI/MMI Devices

RITTAL INDIA PVT. LTD.

Compact Enclosure AE Boxes, Junction Boxes EB and KL Series; Enclosure systems PS Series; Plastic Enclosures KS Series; Industrial workstations; PC Enclosures; SS Enclosures; Power Distribution Systems - Busbars; Cooling units; Climate control system; Heat Exchangers




SCHNEIDER ELECTRIC

Power Monitoring Devices like V/I/Kwh/F meters; Energy Audit; Power Quality Audit; Lighting Energy Saver Cool lite; Training for energy efficiency

Phoenix Contact

Clipline - Modular Terminal Blocks and Accessories; Pluscon - Industrial Connectors (Circular Connectors; Heavycon Connectors); Combicon - PCB Connectors; Male/Female Connectors etc.; Trabtech - Surge Protection systems & Devices, UPS, EMC Solutions; Interface - Power supplies, PLC Relays, Wireless Solutions, Cabling Solutions for PLC, Signal Isolators, etc; Automation Solutions - Ethernet Switches; Profibus Connectors, Remote I/O Systems,




EMERSON

AC Power UPS (Offline and Line Interactive UPS Systems); Rack Mounted UPS; Solutions for Data Centers; Surge Protection Devices; Batteries

BHARAT BIJLEE

3 Phase AC Induction Motors (Standard Motors & High Efficiency Motors); Flame Proof Motors; KEB Drives; Crane Duty and Brake Motors; Special Purpose Motors



Bharat Bijlee



CABLE CORPORATION OF INDIA

Armoured & Unarmoured Power Cables (Copper & Aluminum); PILC Cables; XLPE Cables; PVC Cables; EHV Cables; FLRSH Cables; Cable Jointing Kits; Cable End Termination Kits

Finolex Cables Ltd.

FR House Guard Wires; FRLS Flame guard Wires; PVC Single Core & Multicore Cables; Power Cables; Telephone & Ethernet Cables; Switchboard Cables




JEF

Lighting & Surge Protection Solutions; Earthing Solutions; Transient Over Voltage Protection Devices;

Kaycee

Rotary & CAM Switches; Water Meters; Mechanical Counters; Panel Meters etc




Lighting Product

Legrand

MCBs; ELCBs; RCCBs; Light Switches etc.



Head Office:

254, Dhar Road, Indore

INDIA | Ph.: +91 731 2380634, 2380805

Fax: +91 731 2388076 | Email: sanjay.jain@utindia.in,
eaindore@eaindia.co.in, utindore@gmail.com

www.utindia.in • www.eaindia.co.in